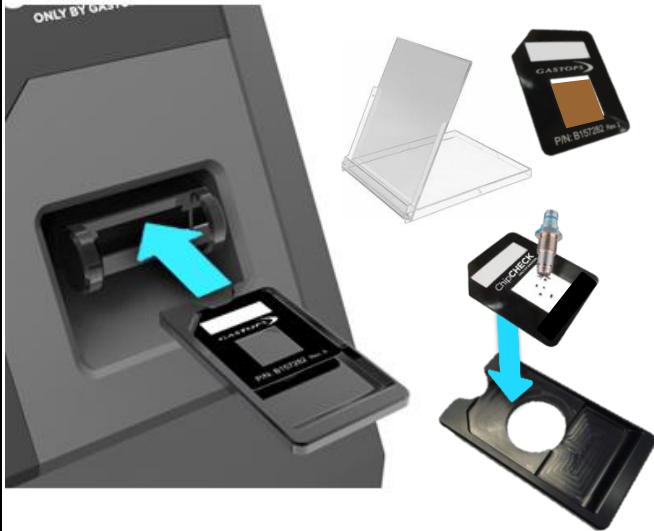
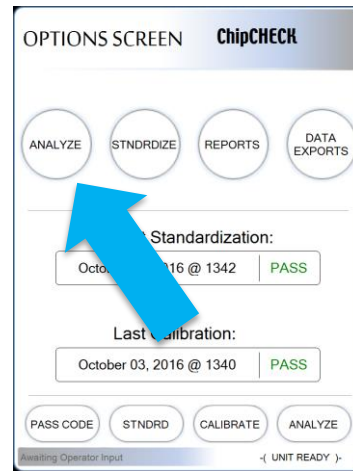


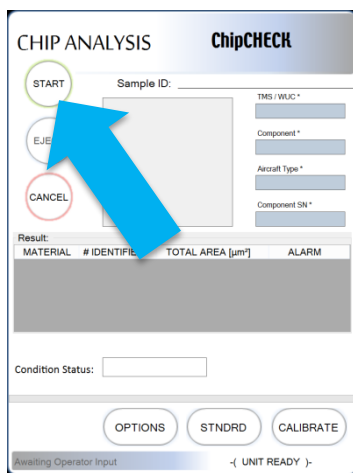
1. Insert the prepared Sample Patch into the unit.



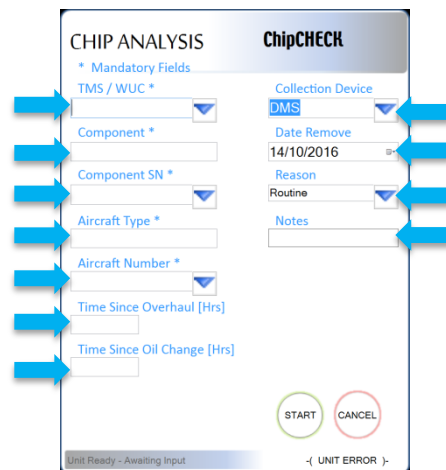
2. From the "Options Screen" select "Analyze".



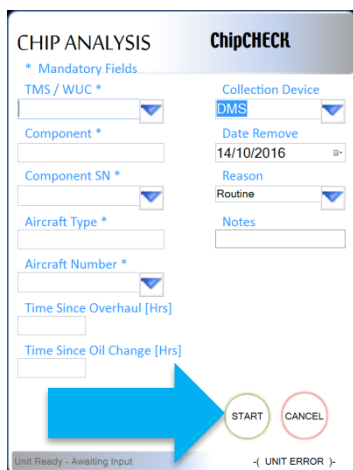
3. From the "Chip Analysis" screen select "Start".



4. Enter the debris source information into the provided data entry fields.



5. Once all of the data has been entered select "Start".



6. Allow for the analysis to complete. Choose to view the PDF report or analyze the next sample.

